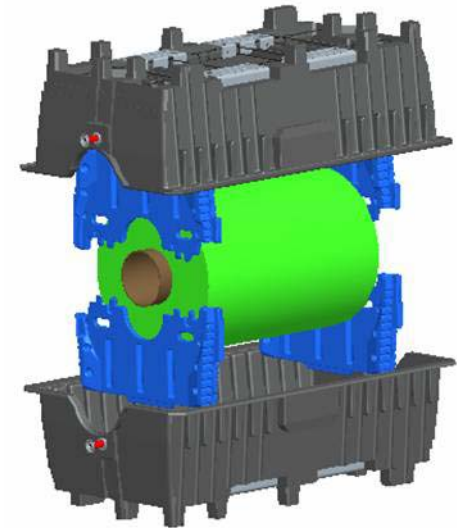
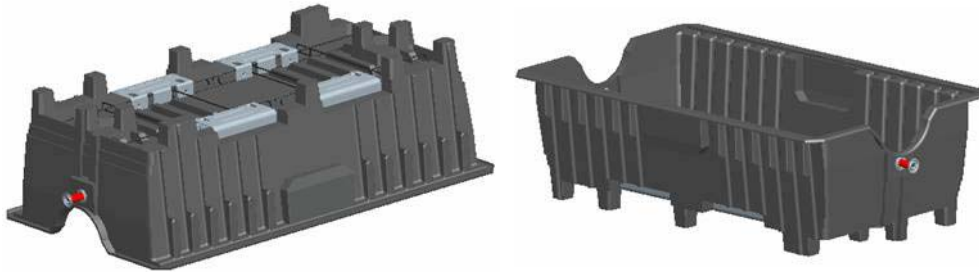


- A strategic partnership between Cascade Engineering of Grand Rapids Michigan and Dolav Plastic Products of Israel each with over 30 years experience in plastic molding.
- Manufactures injection molded material handling products for industrial and agricultural applications.
- Product range includes :
 - * MACX [®] container
 - * KitBin [®] modular knock-down bin
 - * Greystone recycled pallets

Roll Pack Assembly

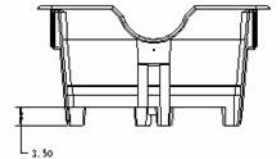
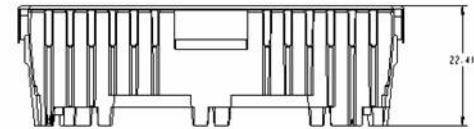
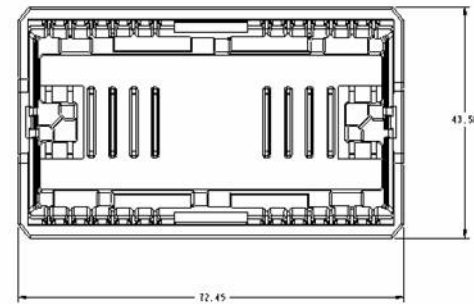


Roll Container Specs.



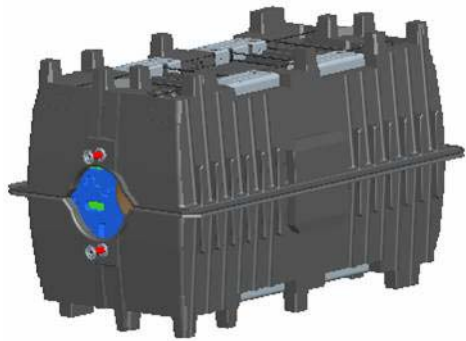
- Roll diameter up to 30"
- Roll length 18" to 62" - in 2" increments
- 8" x 14" label area on sides and ends
- 100% high density polyethylene
- Wire reinforced base
- Mirror image interlocking legs for stacking

Roll Container Dimensions

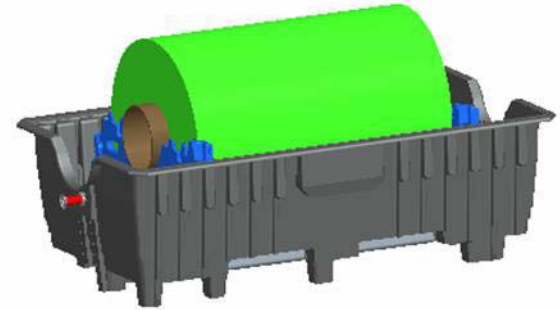


Roll Pack

Loaded Roll Pack shown
ready to ship.



Open pack
showing sample
roll
Roll is supported in
place with Load
Bearers
Load Bearers
adjustable to
handle rolls 18" to
62" in length – in
2" increments



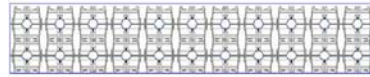
Roll Pack Stack



Shipping Configuration – Full Packs



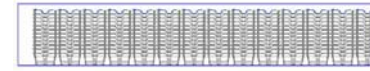
53' Semi-Trailer – 28 Packs



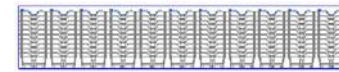
40' Sea Container – 22 Packs



Shipping Configurations – Nested Packs



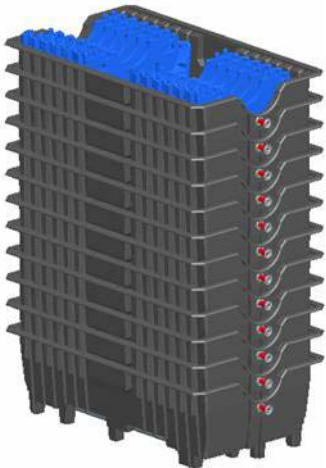
53' Semi-Trailer – 84 Packs



40' Sea Container – 55 Packs

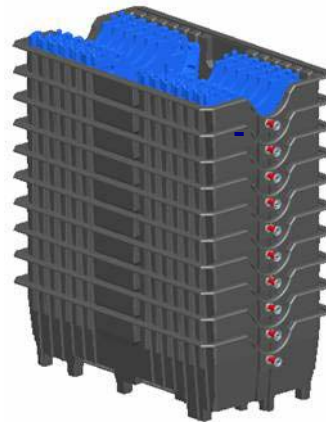


Empty Nested Containers



53' Semi-Trailer – Empty
Nested Height

6 Packs



40' Sea Container – Empty Nested
Height

5 Packs



DECADE PRODUCTS®

Toll Free 1-877-365-2887

Fax 1-616-254-4259

info@decadeproducts.com

www.decadeproducts.com